



Installation Guide

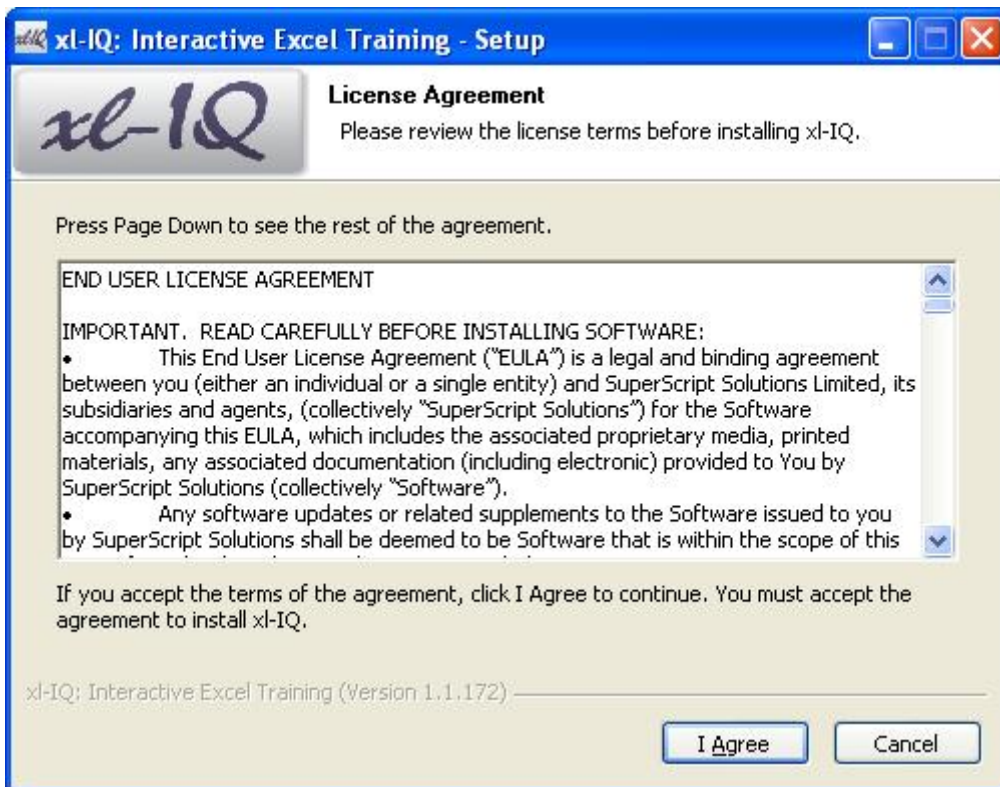
Step 1: Launching the xl-IQ Installation Application

In order to install xl-IQ you need to run the installation application. If you are using a DVD to install xl-IQ then this file will be called SETUP.EXE and can be found within the root of the installation DVD (or network folder containing the same installation files). If you have AutoRun enabled then inserting the DVD should automatically launch this setup program.

However, if you are using an installation package downloaded from xl-IQ then you just need to launch this single EXE file in order to run the setup program.

Step 2: Accepting the End User License Agreement

Once you have launched the installation process you will need to wait a few moments for the Setup Application to be displayed, where the 'xl-IQ: Interactive Excel Training - Setup' dialog box should then appear on your screen:

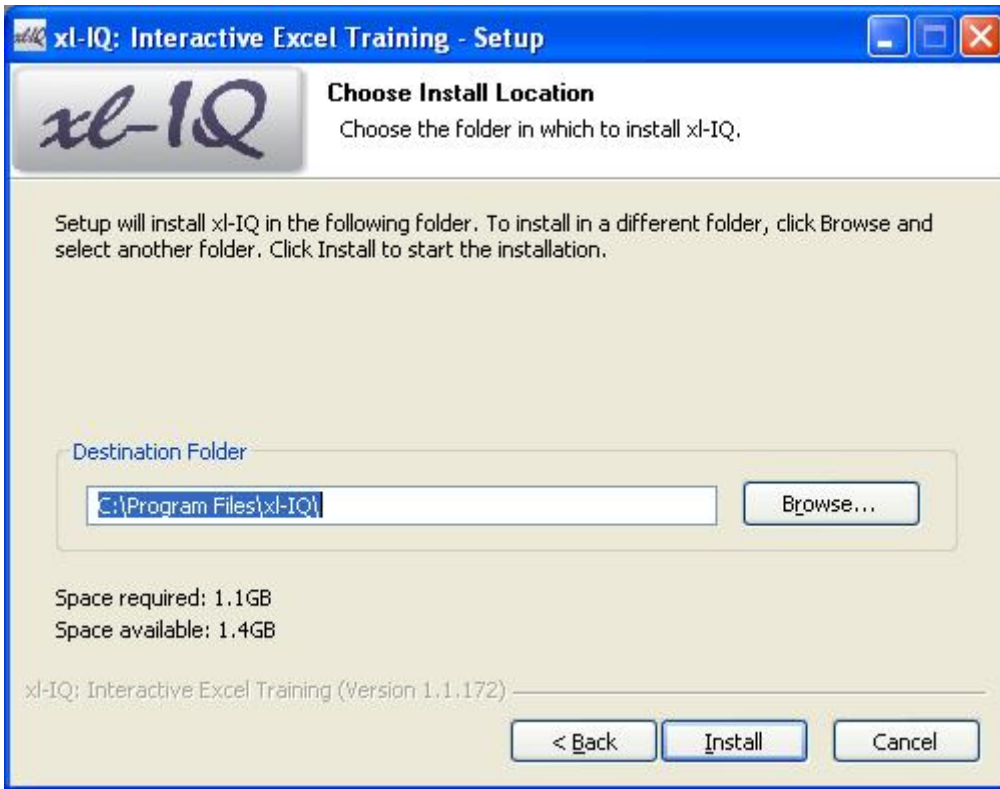


Before you can install xl-IQ you need to read the End User License Agreement shown within this dialog box. If you accept the terms and conditions shown then you need to click on the 'I Agree' button at the bottom of this dialog box.

Step 3: Selecting the Install Location

By default xl-IQ will be installed within a sub-folder called 'xl-IQ' within the 'Program Files' folder on your local hard drive. However, if you wish to modify this default install location then you just need to use the 'Browse...' button in order to select a new location.

Once you have chosen the install location you then need to click on the 'Install' button:

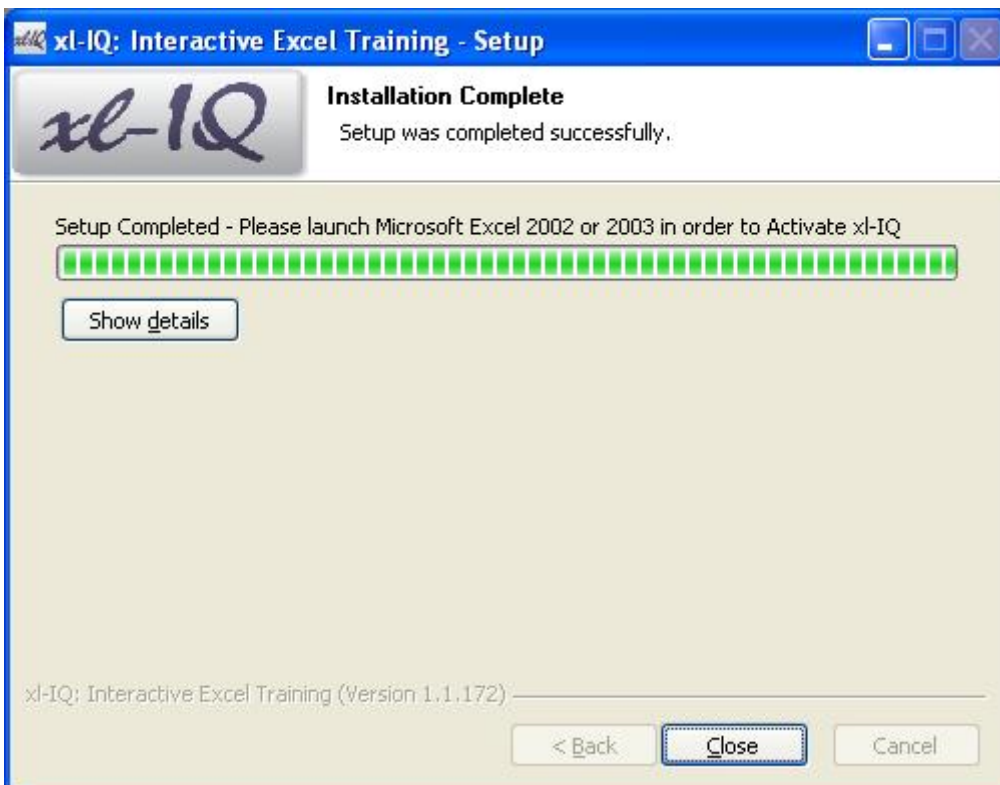


Step 4: Installation Process

The installation application will take a few minutes to copy all the required files to your computer. A status bar along the top of this new dialog box will give you an indication of the installation progress:

When all files have been copied successfully the 'Installation Complete' message will appear at the top of the dialog box. In order to exit this installation application you now just need to click on the 'Close' button.

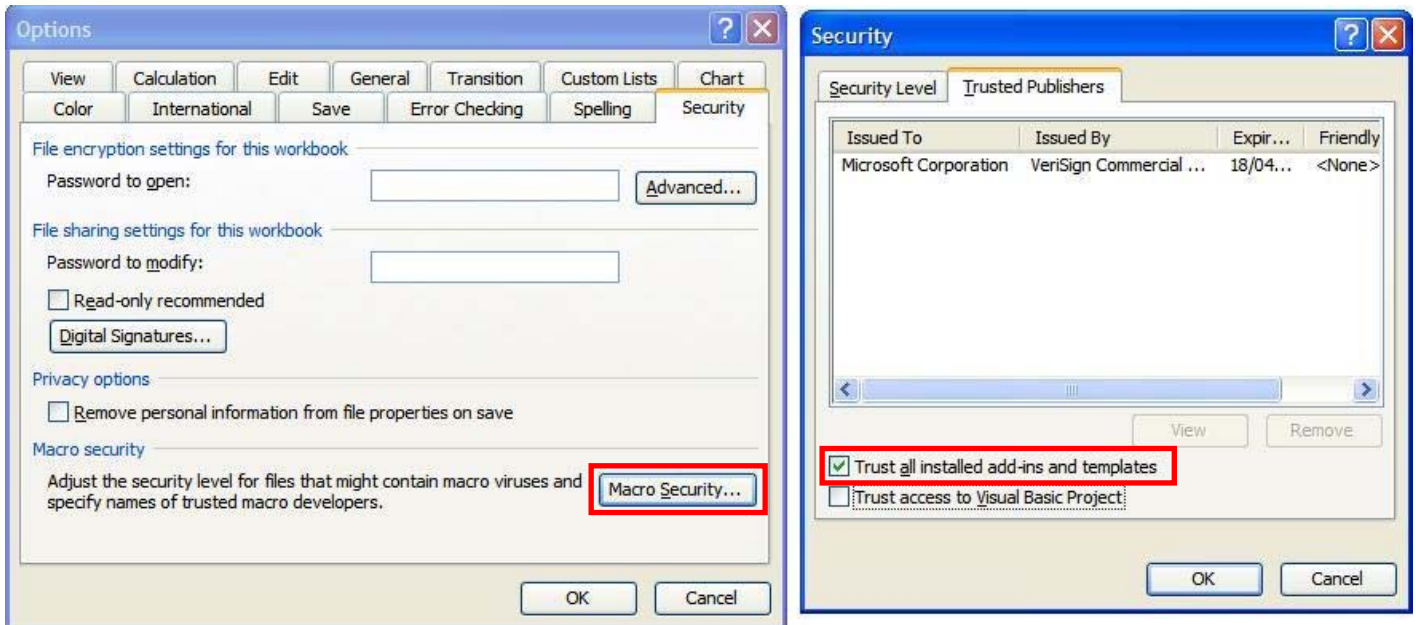
xl-IQ is now installed, and will be launched when you next open Microsoft Excel 2002 or 2003.



Step 5: What happens if xl-IQ does not launch when you open Excel

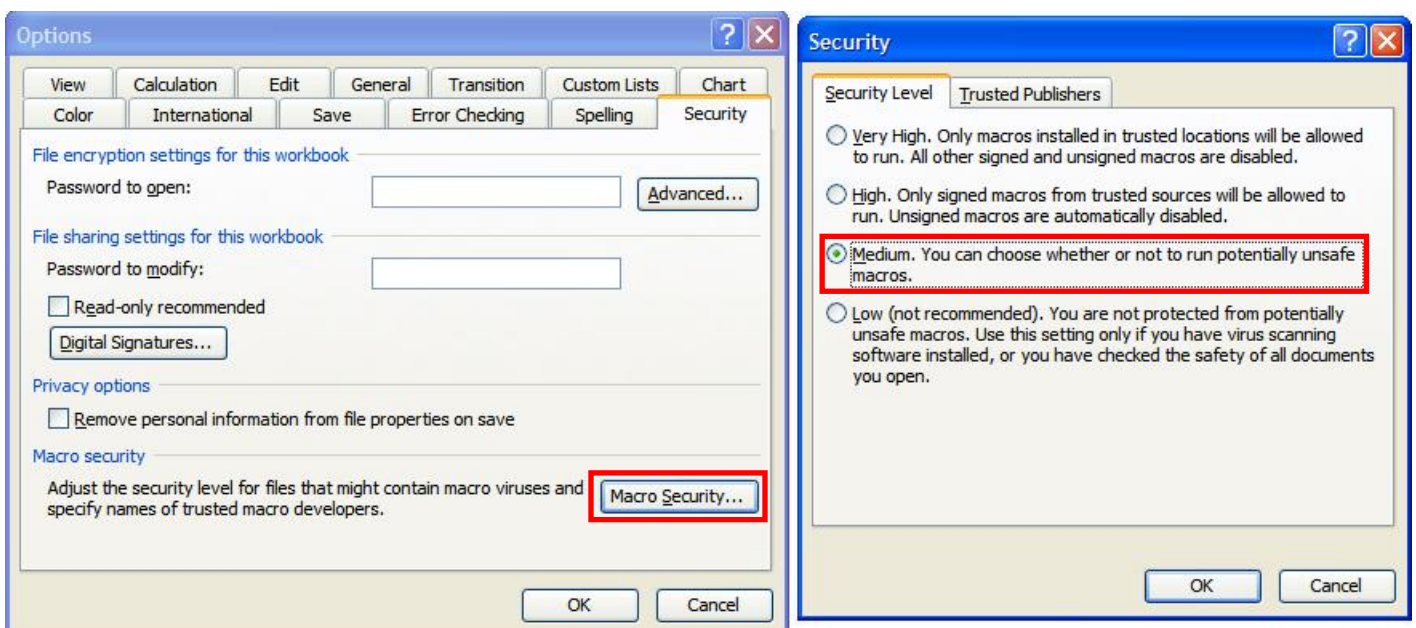
If you have installed xl-IQ successfully, as indicated in the snapshot shown in Step 4 above, then xl-IQ should normally launch the next time you open Microsoft Excel. However, if this does not happen, then it might be because Excel's security settings are blocking the xl-IQ DLL from launching when Excel starts up. Below are 2 solutions to this problem, with the 1st being the recommended approach:

5.1 - Excel Security Settings: Recommended Approach



1. Open Excel's Options dialog box using the Options command under the Tools menu
2. Select the 'Security' tab (should appear similar to the left hand portion of the above snapshot)
3. Click on the 'Macro Security...' button (highlighted in the above snapshot)
4. Choose the 'Trusted Publishers' tab on the Security dialog box that will then open
5. Ensure that the 'Trust all installed add-ins and templates' checkbox is ticked, as this will ensure that xl-IQ.DLL will be trusted by Excel.
6. Click OK to close down both the Security and Options dialog boxes, and then close down Excel.
7. When you next open Excel, xl-IQ should launch with the necessary security privileges.

5.2 - Excel Security Settings: Alternative Approach



1. Open Excel's Options dialog box using the Options command under the Tools menu
2. Select the 'Security' tab (should appear similar to the left hand portion of the above snapshot)
3. Click on the 'Macro Security...' button (highlighted in the above snapshot)
4. Choose the 'Security Level' tab on the Security dialog box that will then open
5. Choose the Medium Security Level, as this will allow xl-IQ to run, although this will require you to Enable Macros each time Excel opens.
6. Choosing the Low option would avoid the need to Enable Macros each time, but it is strongly recommended that you do NOT choose this option, as other potentially harmful macros would then also be allowed to run without warning.
7. The 1st approach recommended in Step 5.1 above is by far the safer option, as this allows you to still choose your own overall Security Level on this 1st tab, but then ensures that all Add-Ins that you have installed (and therefore are likely to be willing to allow macros to be enabled for) will have sufficient privileges.

If these 2 approaches do not correct the problem, and xl-IQ is still not being launched when Excel starts up, or if the 1st approach fails and you do not want to use the 2nd approach, then please contact xl-IQ at support@xl-iq.com so that we can help you fix this problem.

Step 6: What happens if an error occurs during Installation

If you receive an Error Message while installing xl-IQ then the following information could help to correct this problem. Otherwise please contact xl-IQ at support@xl-iq.com:

Error Message 1 - "There was a problem while trying to register the required DLLs, and xl-IQ might therefore not function correctly. If this is the case then please contact xl-IQ at support@xl-iq.com."

The likely cause of this error is that you do not have the required administrator rights on the computer in question, which is preventing the DLLs from being registered by the Setup program. Please ensure that the Setup program is run with administrator rights.

Error Message 2 - "An unexpected error occurred while trying to unpack the necessary xl-IQ files. If this error persists, please contact xl-IQ at support@xl-iq.com."

This error will likely be the result of corrupted installation files. If you receive this error message and a re-install does not solve the problem then please contact xl-IQ for a new installation DVD.

Error Message 3 - "An unexpected error occurred while trying to create the necessary xl-IQ registry keys. If this error persists, please contact xl-IQ at support@xl-iq.com."

As with the 1st error message this is likely caused by insufficient access rights to the system registry. Please ensure that the Setup program is run with administrator rights in order to overcome this problem.

Error Message 4 – "An error occurred while trying to register and authorise the required xl-IQ DLLs. If this error persists, please contact xl-IQ at support@xl-iq.com."

This error will again likely be caused by insufficient access rights to the system registry or file system. Please ensure that the Setup program is run with administrator rights in order to overcome this problem.