



Installation Guide

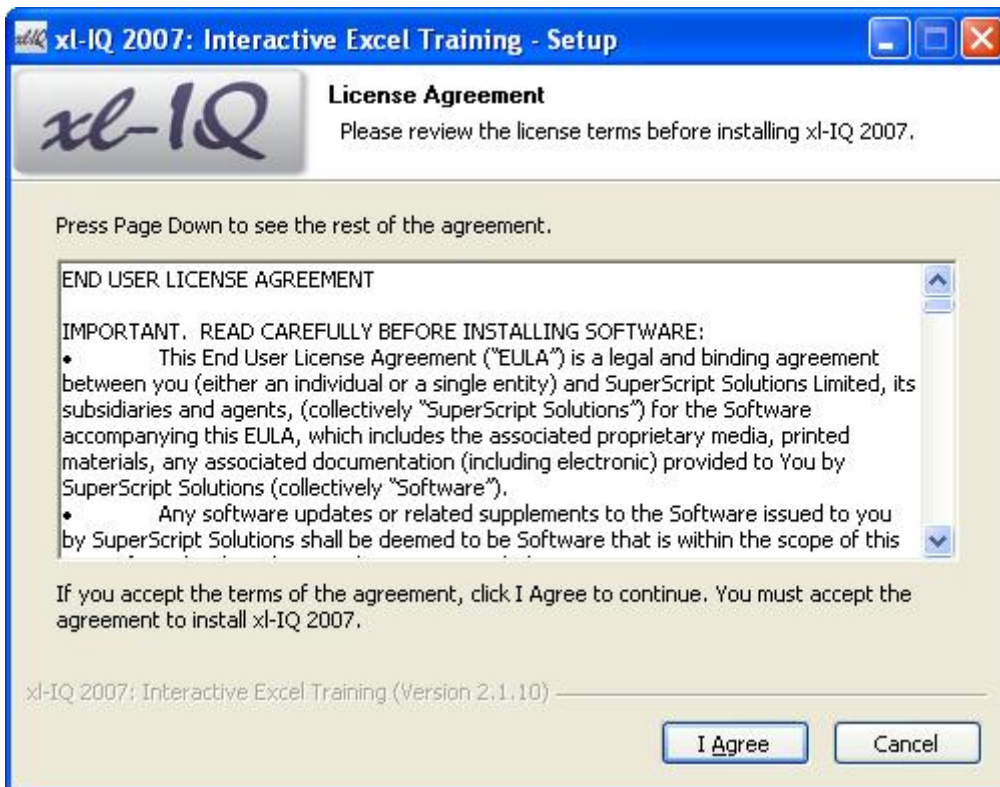
Step 1: Launching the xl-IQ 2007 Installation Application

In order to install xl-IQ 2007 you need to run the installation application. If you are using a DVD to install xl-IQ then this file will be called SETUP.EXE and can be found within the root of the installation DVD (or network folder containing the same installation files). If you have AutoRun enabled then inserting the DVD should automatically launch this setup program.

However, if you are using an installation package downloaded from xl-IQ then you just need to launch this single EXE file in order to run the setup program.

Step 2: Accepting the End User License Agreement

Once you have launched the installation process you will need to wait a few moments for the Setup Application to be displayed, where the 'xl-IQ 2007: Interactive Excel Training - Setup' dialog box should then appear on your screen:

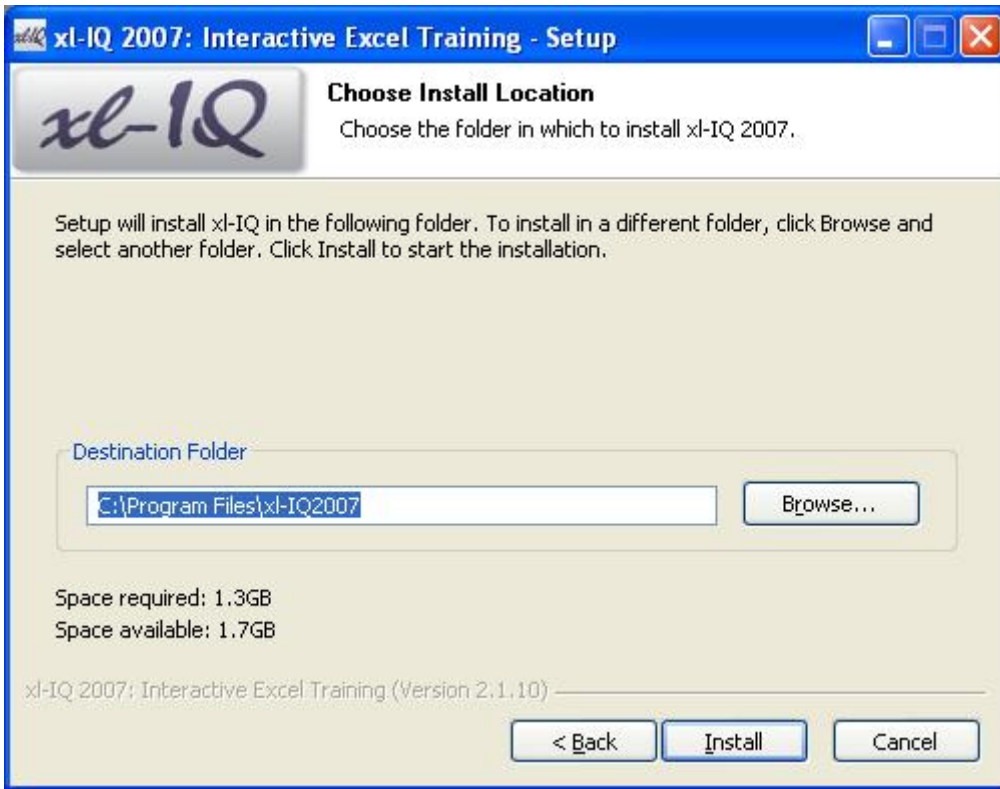


Before you can install xl-IQ 2007 you need to read the End User License Agreement shown within this dialog box. If you accept the terms and conditions shown then you need to click on the 'I Agree' button at the bottom of this dialog box.

Step 3: Selecting the Install Location

By default xl-IQ 2007 will be installed within a sub-folder called 'xl-IQ2007' within the 'Program Files' folder on your local hard drive. However, if you wish to modify this default install location then you just need to use the 'Browse...' button in order to select a new location.

Once you have chosen the install location you then need to click on the 'Install' button:

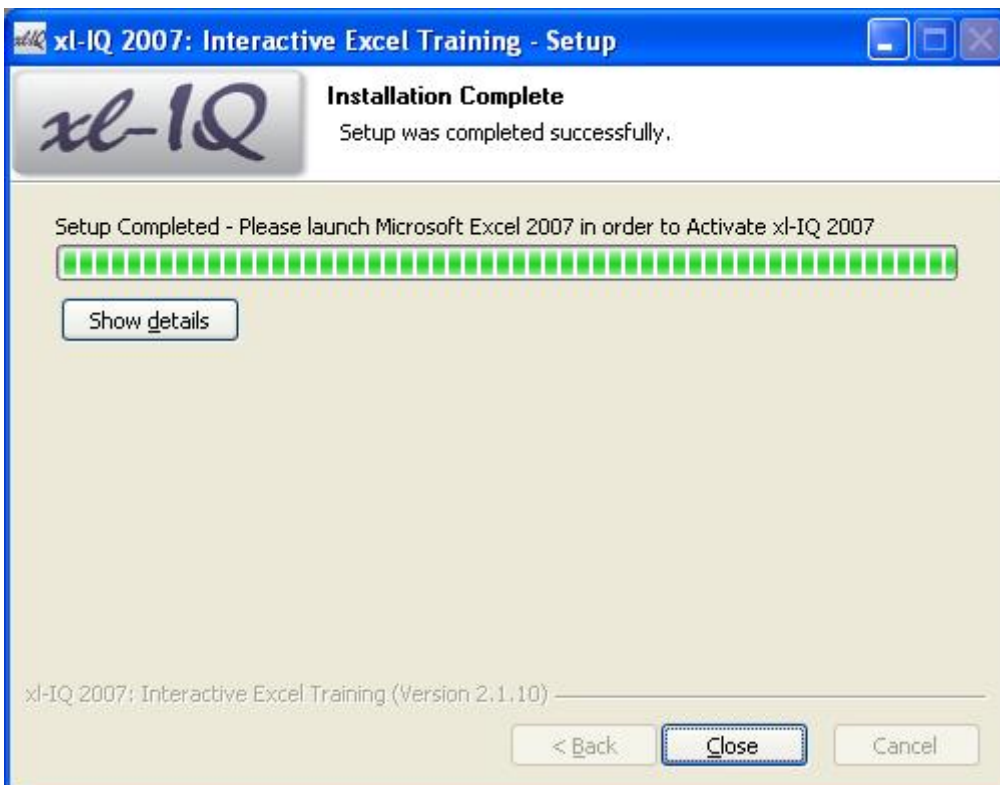


Step 4: Installation Process

The installation application will take a few minutes to copy all the required files to your computer. A status bar along the top of this new dialog box will give you an indication of the installation progress:

When all files have been copied successfully the 'Installation Complete' message will appear at the top of the dialog box. In order to exit this installation application, you now just need to click on the 'Close' button.

xl-IQ 2007 is now installed, and will be launched when you next open Microsoft Excel 2007.

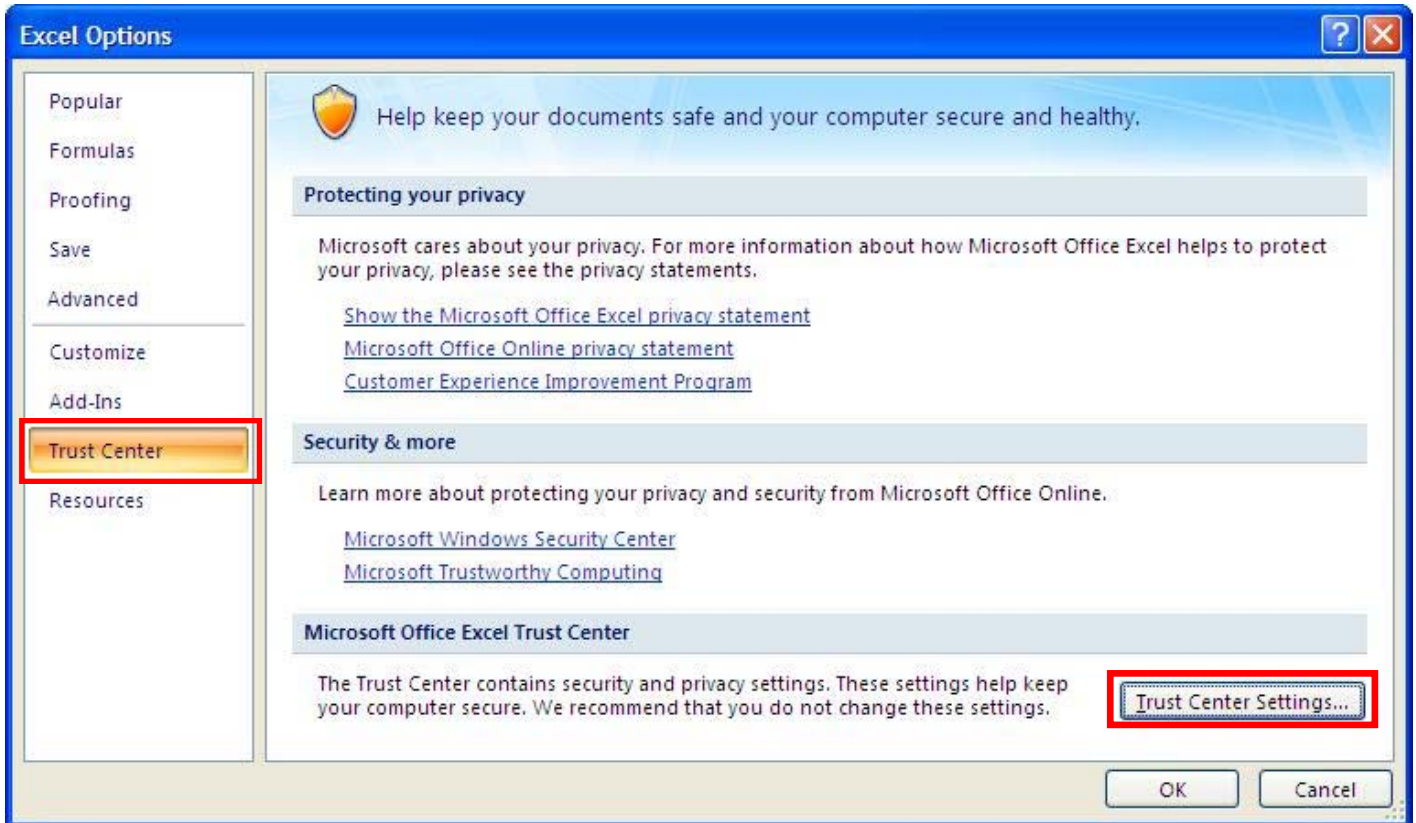


Step 5: What happens if xl-IQ does not launch when you open Microsoft Excel 2007?

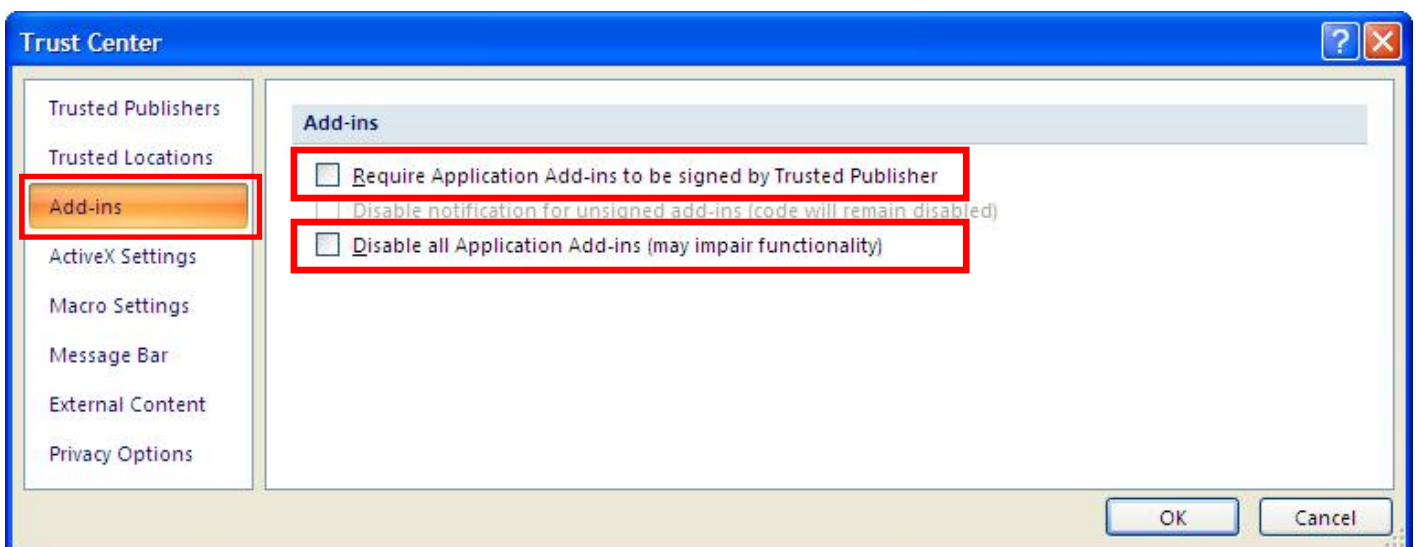
If you have installed xl-IQ 2007 successfully, as indicated in the snapshot shown in Step 4 above, then xl-IQ should normally launch the next time you open Microsoft Excel 2007. However, if this does not happen, then it might be because Excel's security settings are blocking the xl-IQ 2007 DLL from launching when Excel 2007 starts up.

Please check your Trust Center's Add-In Security Settings in order to allow the xl-IQ 2007 DLL to run:

5.1 – Excel 2007's Trust Center



1. Open Excel's Options dialog box using the Office Button popup window
2. Select the 'Trust Center' Category down the left hand side of this dialog box (highlighted)
3. Click on the 'Trust Center Settings...' button on the bottom right of this Category pane (highlighted)



4. Choose the 'Add-ins' Category down the left hand side of this Trust Center dialog box that is now displayed (highlighted).
5. Ensure that the 'Require Application Add-ins to be signed by Trusted Publisher' checkbox is NOT ticked, as this will ensure that the xl-IQ 2007 DLL will be allowed to run by Excel 2007 (highlighted).
6. Ensure that the 'Disable all Application Add-ins (may impair functionality)' checkbox is NOT ticked, as this would block the xl-IQ 2007 DLL from running within Excel 2007 (highlighted).
7. Click OK twice in order to close down both the Trust Center and Excel Options dialog boxes, and then close down Excel 2007.
8. When you next open Excel 2007, xl-IQ should launch with the necessary security privileges.

If changing these Trust Center Add-In Security Settings does not correct the problem, and xl-IQ is still not being launched when Excel 2007 starts up, then please contact xl-IQ at support@xl-iq.com so that we can help you fix this problem.

Step 6: What happens if an error occurs during Installation

If you receive an Error Message while installing xl-IQ 2007 then the following information could help to correct this problem. Otherwise please contact xl-IQ at support@xl-iq.com:

Error Message 1 - "There was a problem while trying to register the required DLLs, and xl-IQ might therefore not function correctly. If this is the case then please contact xl-IQ at support@xl-iq.com."

The likely cause of this error is that you do not have the required administrator rights on the computer in question, which is preventing the DLLs from being registered by the Setup program. Please ensure that the Setup program is run with administrator rights.

Error Message 2 - "An unexpected error occurred while trying to unpack the necessary xl-IQ files. If this error persists, please contact xl-IQ at support@xl-iq.com."

This error will likely be the result of corrupted installation files. If you receive this error message and a re-install does not solve the problem then please contact xl-IQ for a new installation DVD.

Error Message 3 - "An unexpected error occurred while trying to create the necessary xl-IQ registry keys. If this error persists, please contact xl-IQ at support@xl-iq.com."

As with the 1st error message this is likely caused by insufficient access rights to the system registry. Please ensure that the Setup program is run with administrator rights in order to overcome this problem.

Error Message 4 – "An error occurred while trying to register and authorise the required xl-IQ DLLs. If this error persists, please contact xl-IQ at support@xl-iq.com."

This error will again likely be caused by insufficient access rights to the system registry or file system. Please ensure that the Setup program is run with administrator rights in order to overcome this problem.